

# Welcome Zooperheroes!

Complete the missions below to become a certified Philly Zoo Animal Hero!

3400 WEST GIRARD AVENUE

PHILADELPHIA

# ZOO

PHILADELPHIA, PA 19104-1196

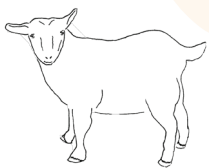


## Animal Allies Assemble!

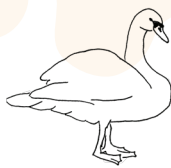
- Take a photo of your group in front of your favorite statue.

## Every Zooperhero needs a trusty sidekick!

Pick the animal that...  
has hair like a mammal



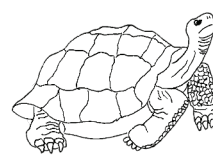
goat



swan



butterfly

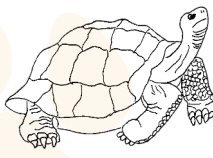


tortoise

has scales like a reptile



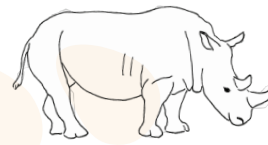
penguin



tortoise



bumblebee



rhino

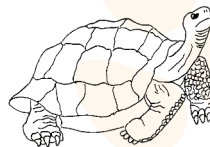
has feathers like a bird



ant



kangaroo



tortoise



turkey

## Practice being a master of disguises!

- Can you...  Waddle like a penguin?  
 Make whiskers like a big cat?  
 Fly like an eagle?

Count how many giant tortoises you see. Remember they can camouflage like rocks!

How many did you find? \_\_\_\_\_

Presented by

**CHASE** 

By connecting people with animals,  
**PHILADELPHIA ZOO**  
creates joyful discovery and inspires  
action for wildlife and habitats

philadelphiazoo.org



## Use your Zooper senses!

Find something that starts with the letter K. \_\_\_\_\_

Look for something that is the color blue. \_\_\_\_\_

Listen for water on your visit. What animal was nearby?

- primates    big cats    hippos    penguins    swans

Use your eye to spy something that is in the shape of a:

square \_\_\_\_\_    circle \_\_\_\_\_

star \_\_\_\_\_    triangle \_\_\_\_\_



## It's a bird, it's a plane — no it's the Zoo360® trail system!

What animals did you see exploring the trail today?



langur



tiger



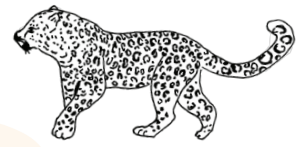
mangabey



gibbon



lemur

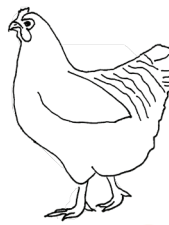


leopard

## Zooperheroes to the rescue!

This is a baby animal and you need to help return it to its home.

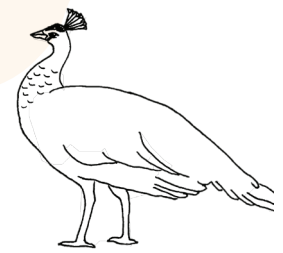
Which animal do you think it belongs to?



chicken



flamingo



peahen

## After your Zoo visit today...

- Lead a meeting with your team and name one way to help animals.

- Visit [philadelphiazoo.org/learn](http://philadelphiazoo.org/learn) to connect with our Zoo experts and learn more!

Presented by

**CHASE** 

By connecting people with animals,  
**PHILADELPHIA ZOO**  
creates joyful discovery and inspires  
action for wildlife and habitats

[philadelphiazoo.org](http://philadelphiazoo.org)

